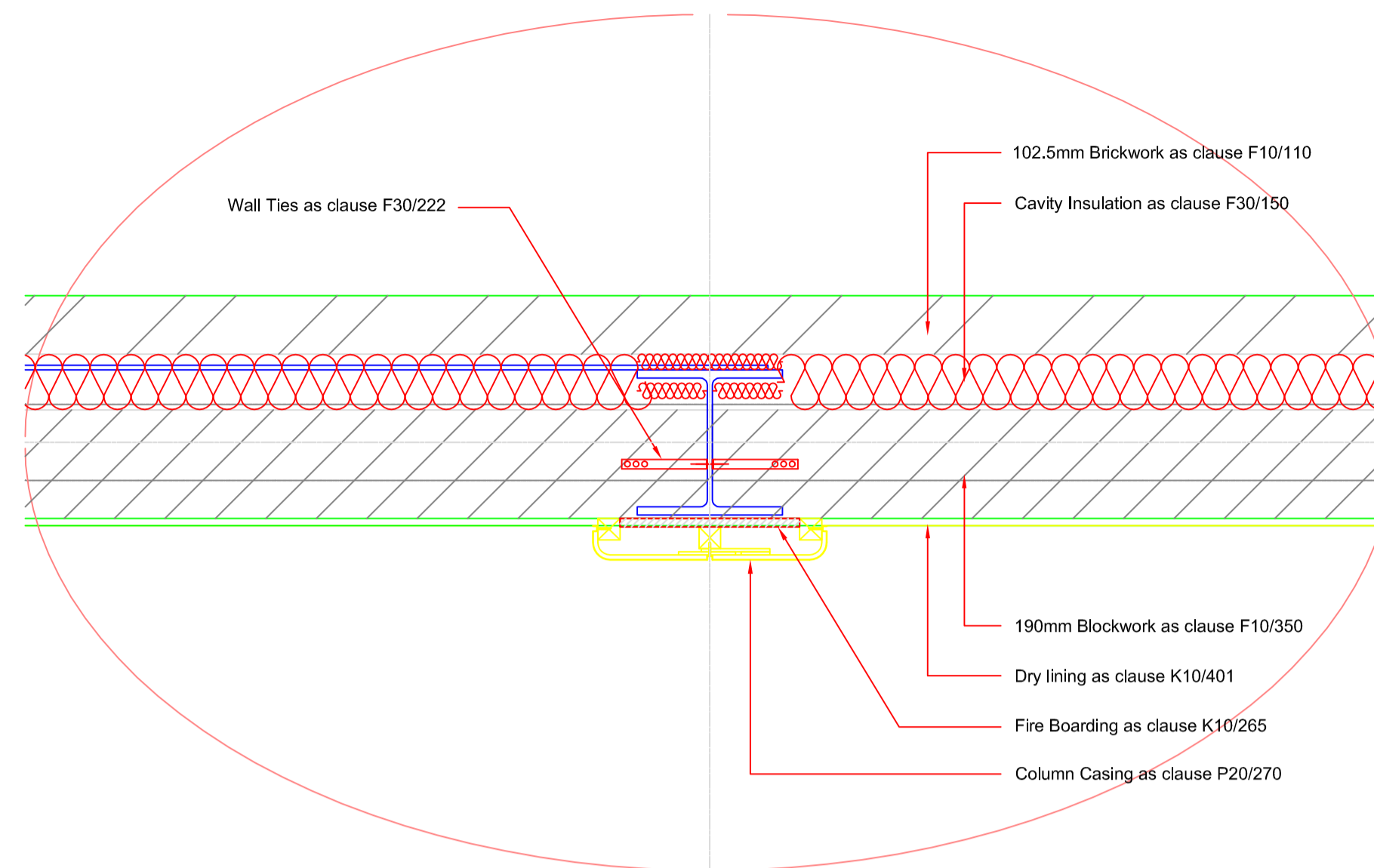
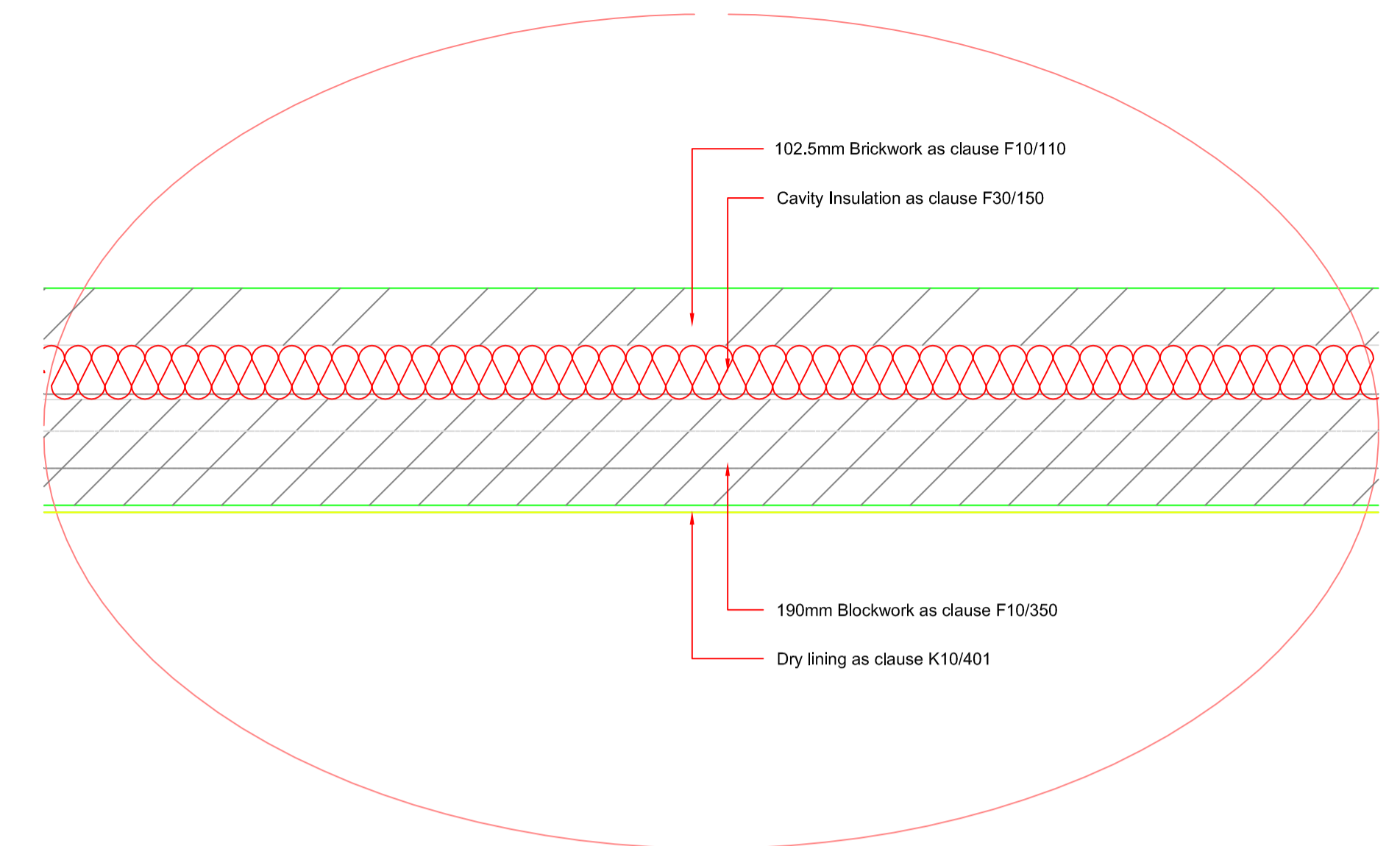


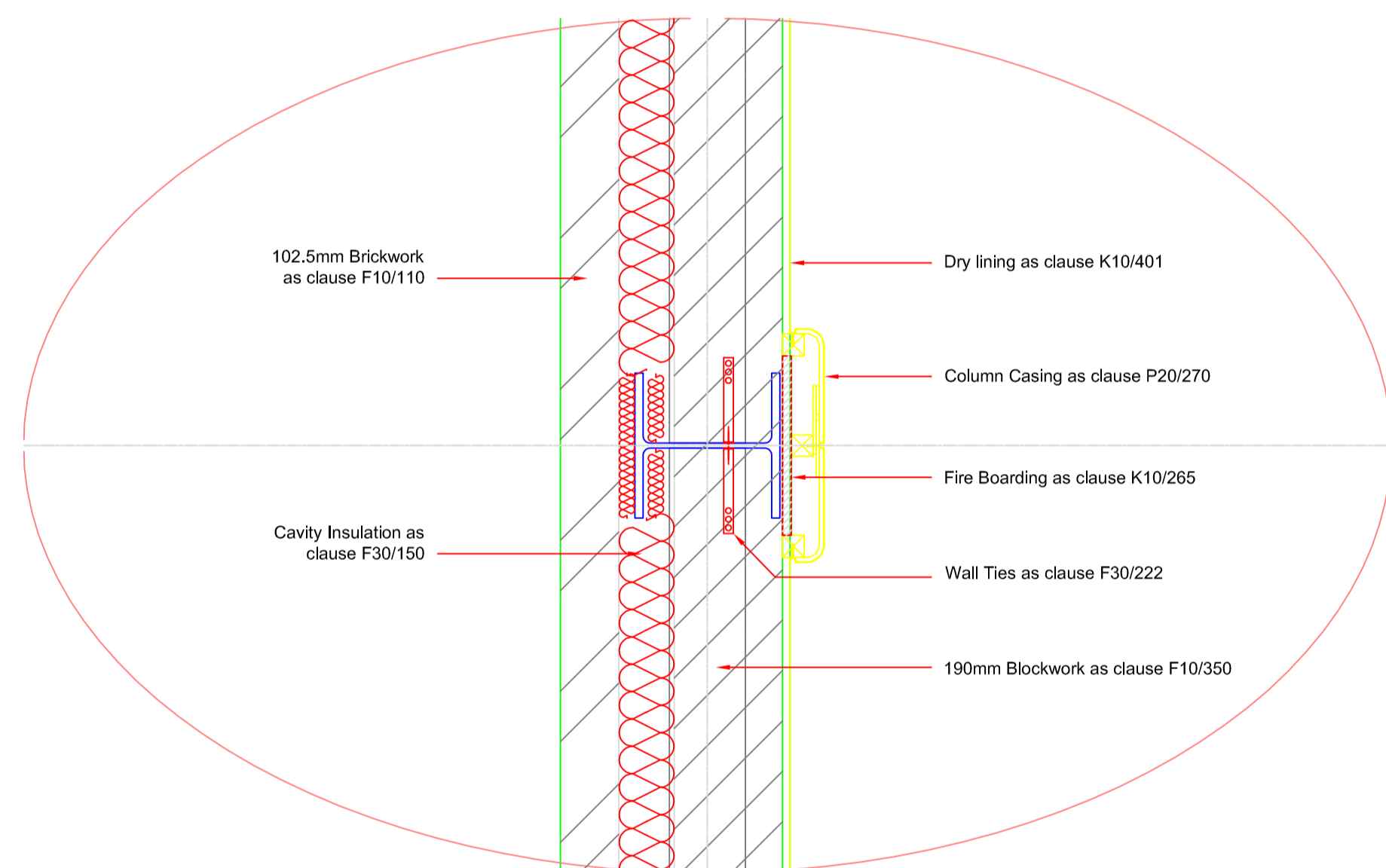
Detail 1



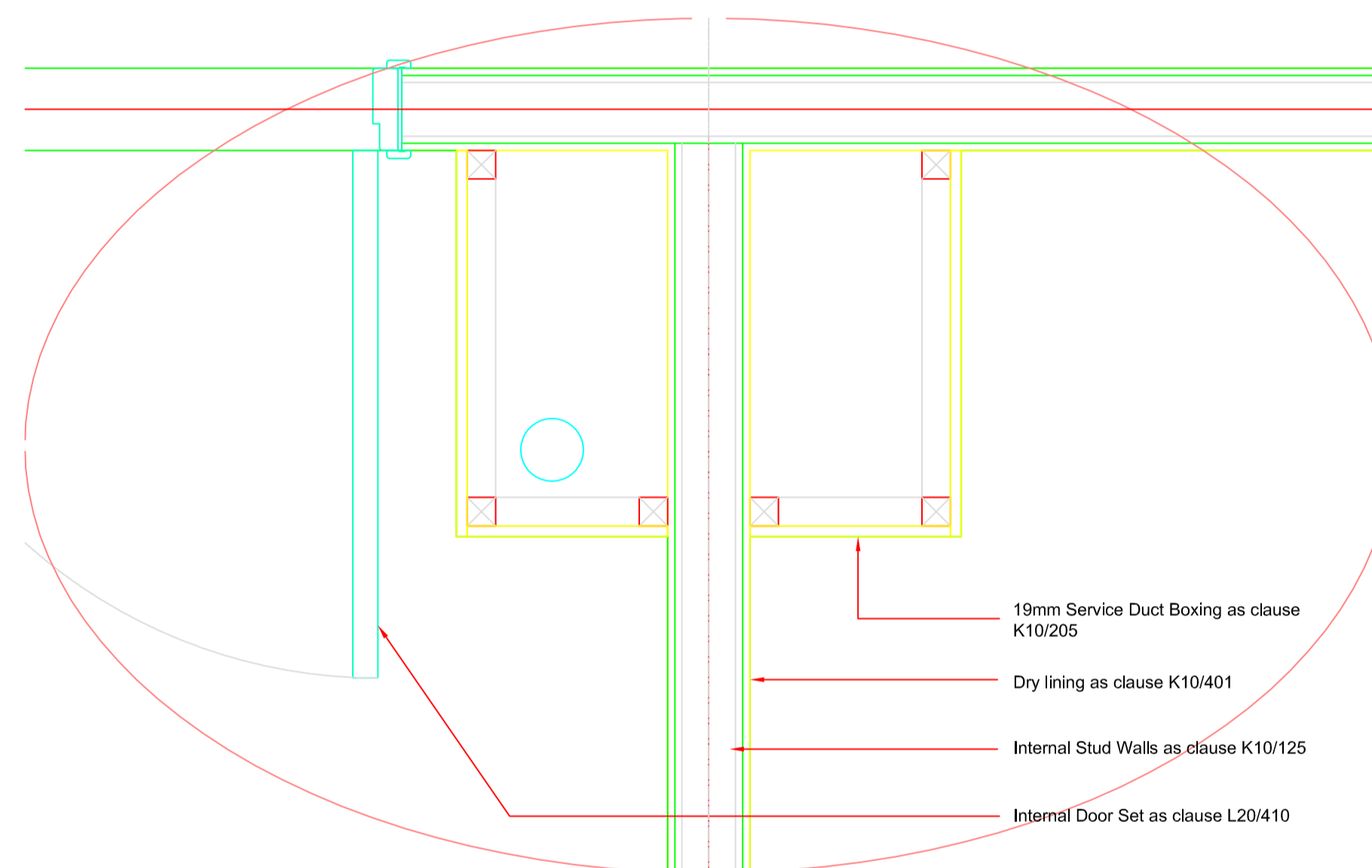
Detail 2



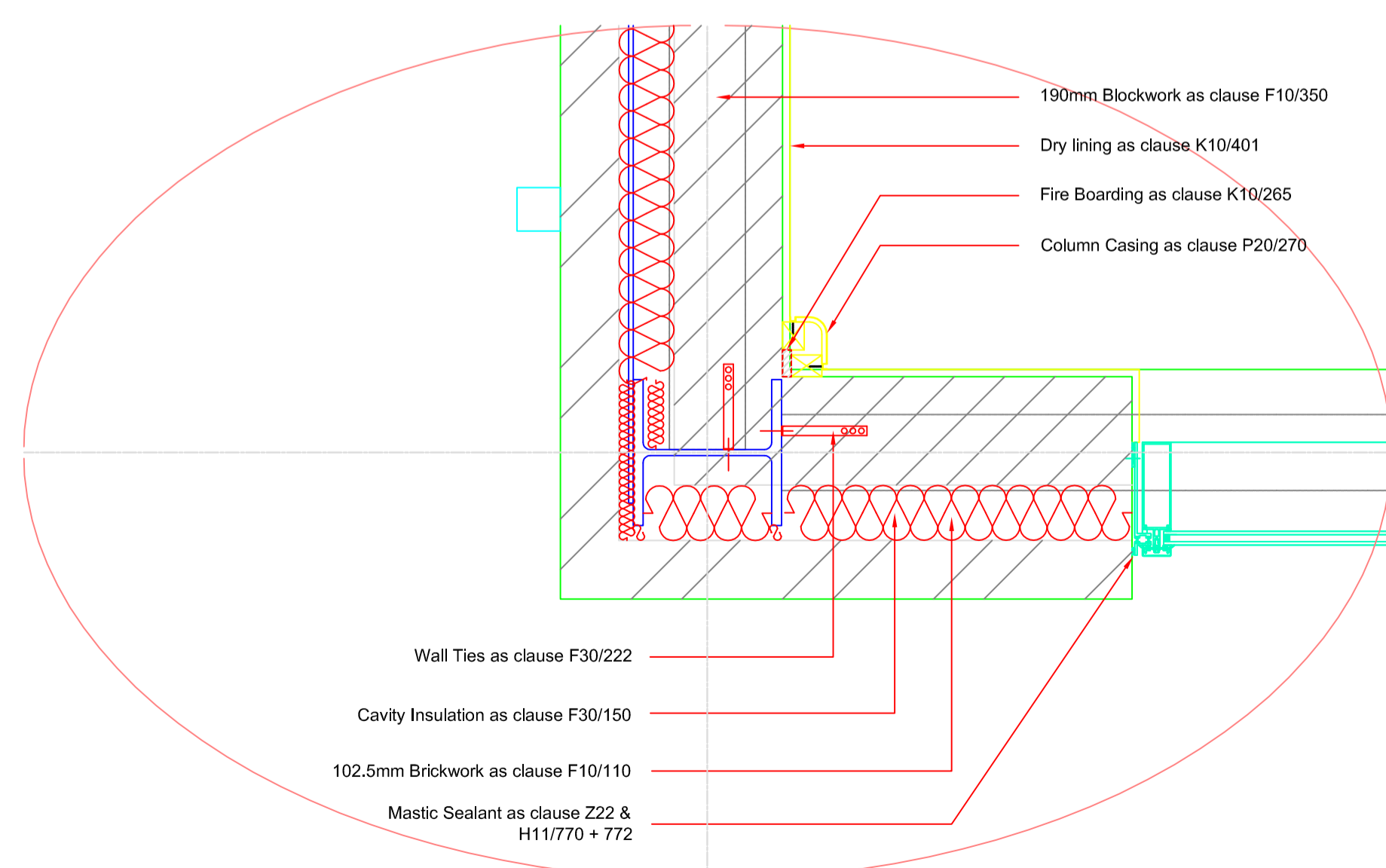
Detail 3



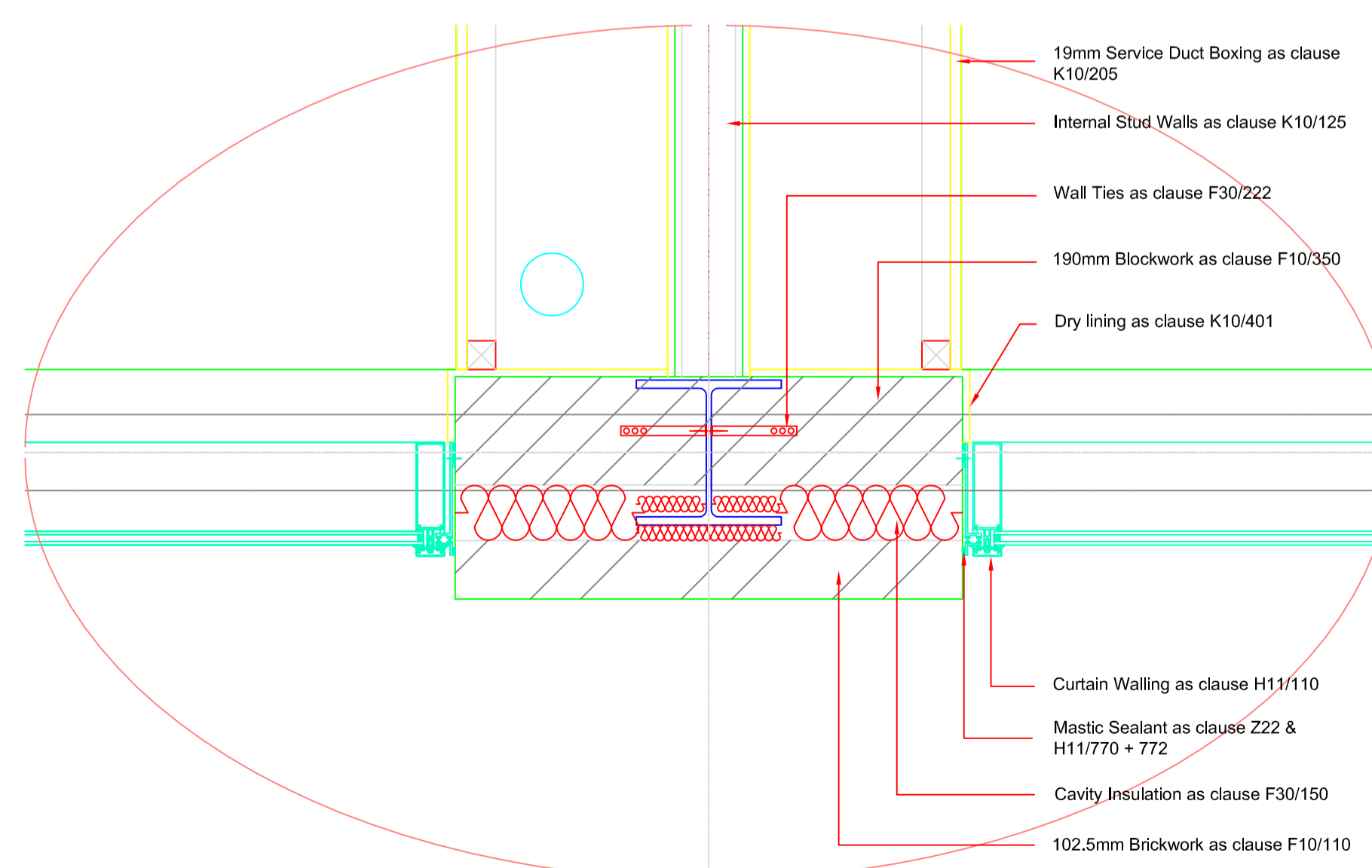
Detail 4



Detail 5



Detail 7



Detail 8

Detail 6

**Notes:**

- All dimensions are in millimeters unless stated otherwise.
- Do not scale from the drawings.
- Existing layout provided by Others.
- Read in conjunction with drawing series 0014385, use in any other scheme should be discouraged.
- All work will be in carried out to the relevant British Standards and to manufacturers instructions/recommendations.
- The Contractor's rates and prices shall be deemed to include for identifying all work intrinsically and indispensably necessary in addition to the detailed works, and for verifying all site dimensions.
- All materials will be as stated or equal and approved by the CA.
- All specification clauses noted on the drawing are cross-referenced with the Princes Risborough School Contract Specification.
- Refer to Structural Engineers drawings for all Sizes and NBS clause's

Rev	Revision Date	Purpose of revision	Drawn	Checked	Approved
<b>JACOBS BAPTIE</b>					
<small>Lincoln Place, Green End, Aylesbury, HP20 2TU, UK Tel: 01296 737 000 Fax: 01296 737 007 www.jacobsbaptie.com</small>					
Client <b>Buckinghamshire County Council</b>					
Project <b>Princes Risborough School Science Laboratories Extension</b>					
Drawing title <b>First Floor Details</b>					
Drawing status <b>DRAFT</b>					
Scale 1:10 @ A1			Do not scale		
JB no. 0014385					
Client no.					
Drawing number <b>AA(3-)-023</b>					Rev
<small>This drawing is not to be used in whole or part other than for the intended purpose and project as defined on this drawing. Refer to the contract for full terms and conditions.</small>					