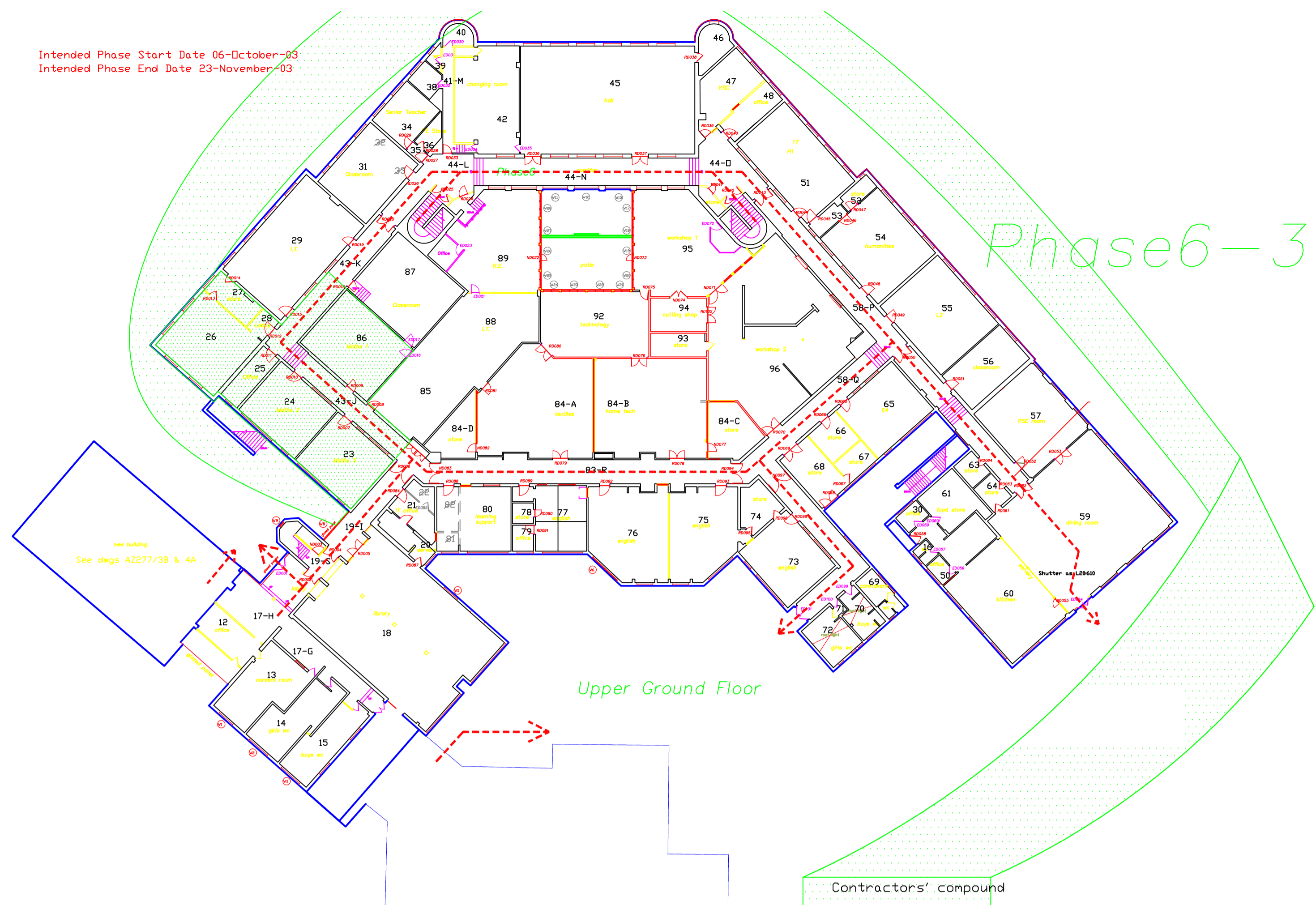


Intended Phase Start Date 06-October-03
Intended Phase End Date 23-November-03

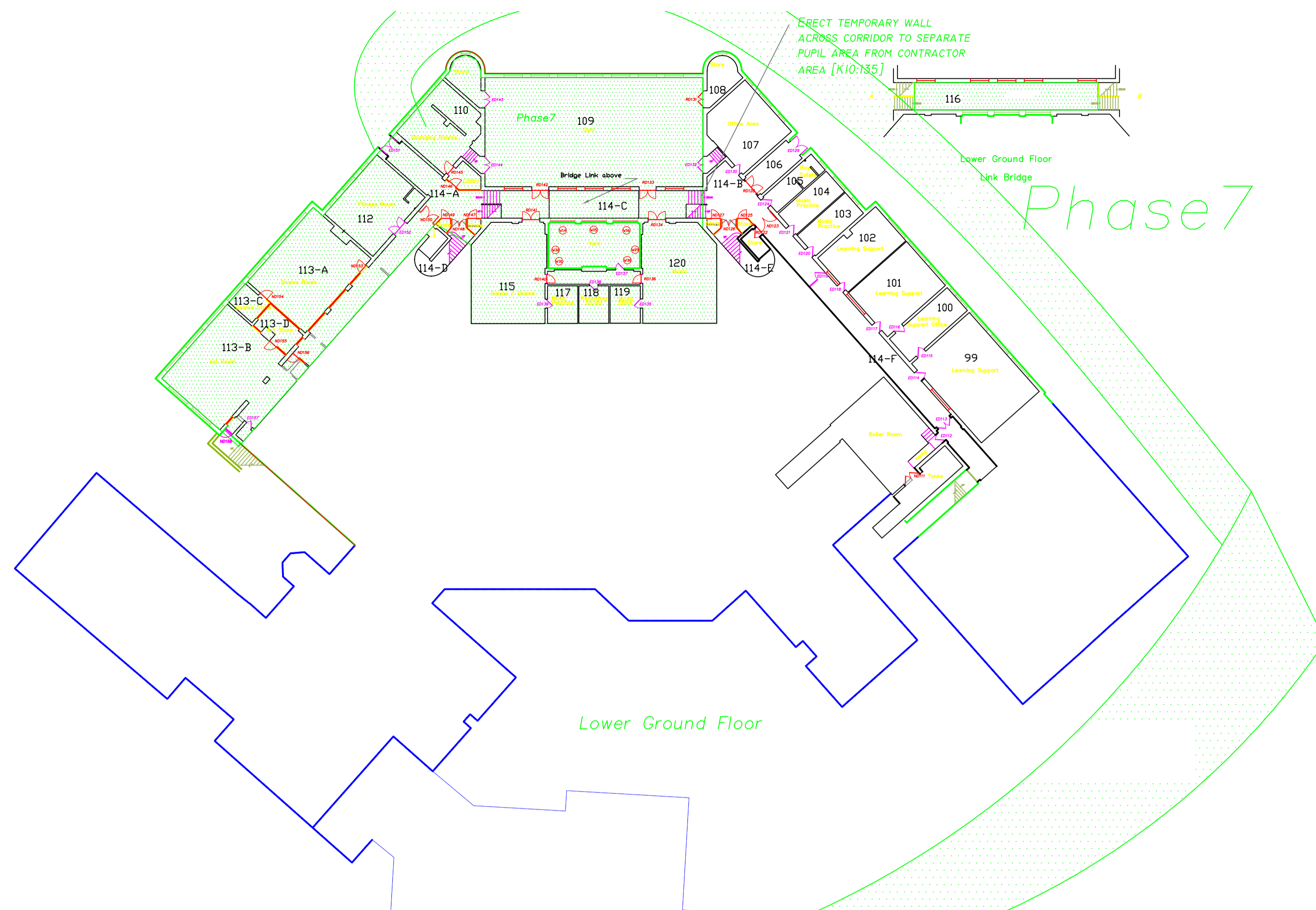


Phase 6-3

Upper Ground Floor

Contractors' compound

ERECT TEMPORARY WALL
ACROSS CORRIDOR TO SEPARATE
PUPIL AREA FROM CONTRACTOR
AREA [K10:135]

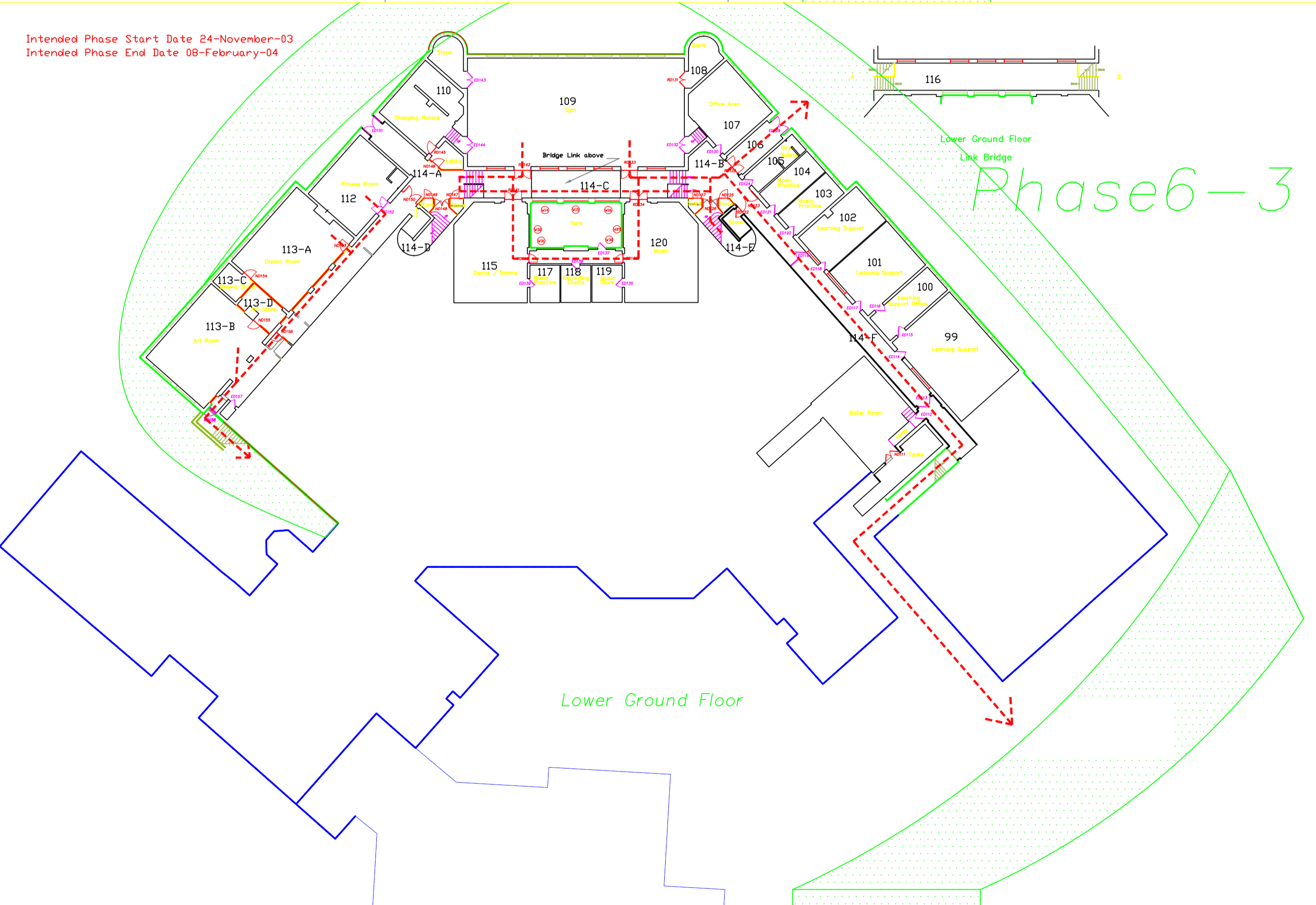


Phase 7

Lower Ground Floor

Lower Ground Floor
Link Bridge

Intended Phase Start Date 24-November-03
Intended Phase End Date 08-February-04



Phase 6-3

Lower Ground Floor

Contractors' compound

0 50
PAPER SCALE CHECK (mm)

Contractors' compound

Sheffield Design & Property
Architects Division
2-10 CARBROOK HALL ROAD SHEFFIELD S9 2DB
Tel. 0114 2736036 Fax. 01142 2736299 Email. admin@sdandp.demon.co.uk
Sheffield Design & Property, Acting Head of Service I G Taylor ARICS

- Do not scale from this drawing
- All dimensions to be checked on site
- Any errors /omissions to be reported immediately
- If in doubt, ask
- No reproduction of this drawing in any form without permission
- Maps are reproduced from Ordnance Survey with permission of HMSO Crown copyright

REV	DATE	REVISIONS	DRAWN	CHECKED

NOTES
School Holiday Dates 16-April-2003 - 27-April-2003 24-May-2003 - 1-June-2003 25-July-2003 - 31-August-2003
25-October-2003 - 2-November-2003 20-December-2003 - 5-January-2004 14-February-2004 - 22-February-2004 5-April-2004 - 18-April-2004

CLIENT: Education	STATUS: Working Drawings
SCHEME: Parkwood High School Refurbishment	SCALE: 1:333
TITLE: Proposed Phasing 3 of 3	DATE: 02-09-03
Scheme No: AX 165	DWG No: AL(0)130

Sheffield City Council
Development Environment & Leisure
Sheffield Design & Property