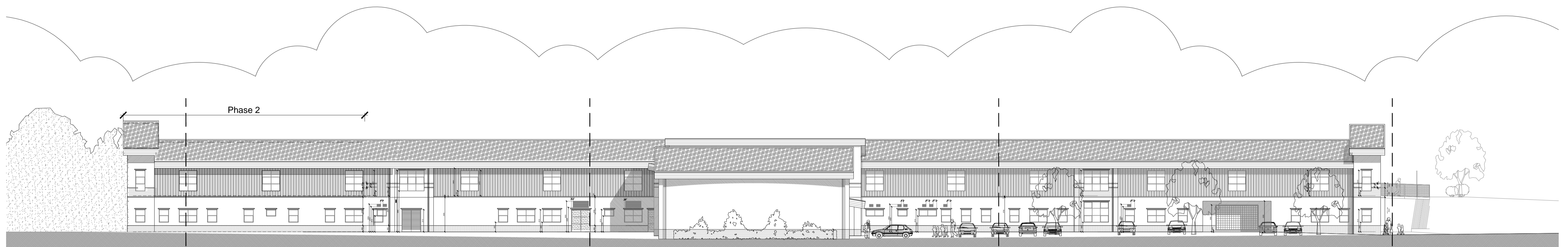
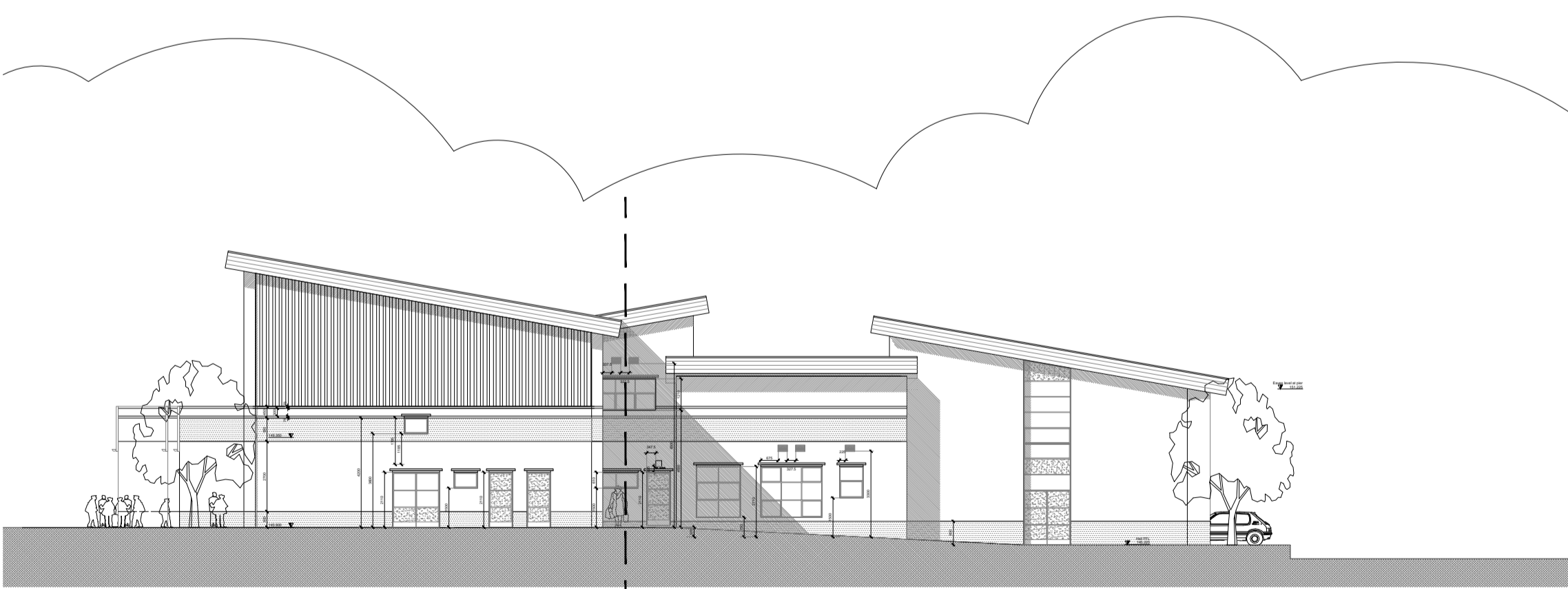


# SOUTH ELEVATION

Brise soleil omitted for clarity (see detail elevations AL (0) 05)



# NORTH ELEVATION



# EAST ELEVATION



# WEST ELEVATION

Phase 2  
1:200

**Sheffield Design & Property  
Architects Division**

2-10 CARBROOK HALL ROAD SHEFFIELD S9 2DB  
Tel 0114 273-6036 Fax 01142-273-6299 Email sdandp@demon.co.uk  
Sheffield Design & Property, Head of Service I R Stubbs ARICS

- Do not scale from this drawing
- All dimensions to be checked on site
- Any errors /omissions to be reported immediately
- If in doubt, ask
- No reproduction of this drawing in any form without permission
- Maps are reproduced from Ordnance Survey with permission of HMSO Crown copyright

REV	DATE	REVISIONS
A	09.10.02	Elevations ammended in line with various changes to plans

DRAWN	CHECKED	REV	DATE	REVISIONS
CB				

CLIENT:	EDUCATION
SCHEME:	NORFOLK PRIMARY SCHOOL (formerly AZ 363)
TITLE:	PROPOSED SKETCH ELEVATIONS Phase 2

SCHEME NO	AX 167	DRAWN	AL (0) 06
SCALE	1:200	CHECKED	
DATE	May 2002	REV	A

